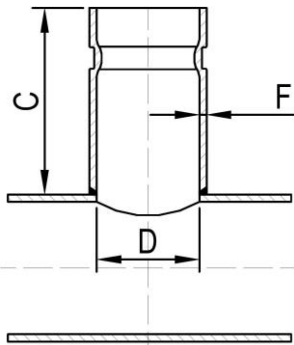


# WELDED OUTLET



## WG02 Welded Outlet (Roll Grooved)

- **Size Range:** 1-1/4" Through 6" Outlet
- **Material:** Carbon Steel
- **Connections:** Roll Grooved
- **UL/ULC Listed**



Outlet Size			Header Size	Dimensions			Wt.
Nominal Size	O.D.			C	D	F	
in.	DN	mm	in.	DN	mm	mm	kg
1 1/4"	32	42.4	1 1/4"	32	76	36.	2.8
			1 1/2"	40	76	37	2.8
			2"	50	76	37	2.8
			2 1/2"	65	76	37	2.8
			3"~4"	80~100	76	37	2.8
			5"~8"	125~200	76	37	2.8
1 1/2"	40	48.3	1 1/2"	40	76	43	2.8
			2"	50	76	43	2.8
			2 1/2"	65	76	43	2.8
			3"~4"	80~100	76	43	2.8
			5"~8"	125~200	76	43	2.8
2"	50	60.3	2"	50	76	55	2.8
			2 1/2"	65	76	55	2.8
			3"	80	76	55	2.8
			4"	100	76	55	2.8
			5"	125	76	55	2.8
			6"	150	76	55	2.8
			8"	200	76	55	2.8
2 1/2"	65	73.0/76.1	2 1/2"	65	76	67/70	3.0
			3"	80	76	67/70	3.0
			4"	100	76	67/70	3.0
			5"	125	76	67/70	3.0
			6"	150	76	67/70	3.0
			8"	200	76	67/70	3.0
3"	80	88.9	3"	80	76	83	3.0
			4"	100	76	83	3.0
			5"	125	76	83	3.0
			6"	150	76	83	3.0
			8"	200	76	83	3.0
4"	100	114.3	4"	100	102	108	3.0
			5"	125	102	108	3.0
			6"	150	102	108	3.0
			8"	200	102	108	3.0
6"	150	165.1/168.3	6"	150	102	158/162	3.4
			8"	200	102	158/162	3.4