

- The coupling is ideally designed for use with Sch10 and Sch40 or BS steel pipe.
- The tongue and groove mechanism with build-in teeth provide rigidity in high flow and pressure pipeline.




### Material Specifications:

#### ◆ Housing

Ductile iron conforming to ASTM A536 Gr. 65-45-12

#### ◆ Rubber Gaskets



Gaskets Material		General Service Recommendations	Color code
	EPDM	EPDM is recognized as the most water resistant rubber available today. Good for cold & hot water up to 250°F (121°C), municipal water, waste water, deionized water. EPDM is not recommended for use with petroleum based oils and fuels, hydrocarbon solvents and aromatic hydrocarbons. EPDM gaskets for water services are not recommended for steam services unless coupling or components are accessible for frequent gasket replacement.	Black Green stripe
	NITRILE	NBR, Buna-N, and Nitrile all represent the same copolymer of butadiene and acrylonitrile (ACN), which is inherently resistant to hydraulic fluids, lubricating oils, transmission fluids and other non-polar petroleum based products and water less than 150°F (65°C). The higher the ACN content, the higher the resistance to oils and heat, but the lower elastic characteristics and compression set. NBR displays poor resistance to hot water and steam.	Black Orange stripe
	SILICON	Silicone (VMQ) FLO Grade "L" Silicone compound features high temperature range stability and low temperature flexibility. Recommended for dry heat and air without hydrocarbons up to 350°F (177°C). Silicone compounds are used in many food and medical applications as they do not impart odor or taste. Not recommended for hot water or steam services.	White

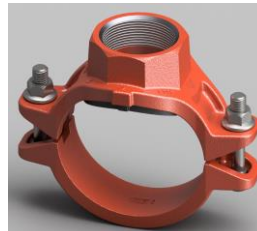
**Note:** Only EPDM has FM approved & UL/ULC Listed.

#### ◆ Bolts & Nuts

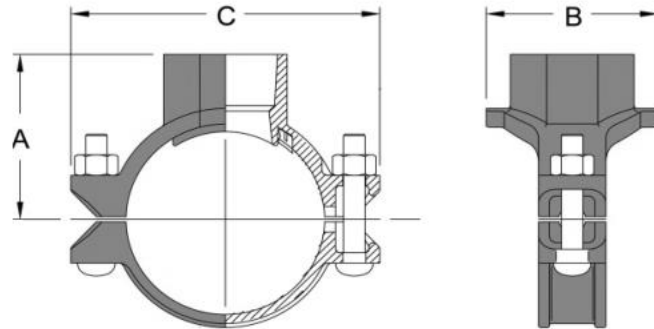
Heat treated, zinc electroplated, or galvanized oval neck track head bolts and hex nuts make of carbon steel in accordance with ASTM A183 (Metric in accordance with ISO 898).

### Surface Finish:

Epoxy Coatings in RAL3000 red, available with hot dipped galvanized finish or orange painted.



### MT2 - Mechanical Tee



◆ Threaded Outlet



### Dimension

Nominal Size DN / NPS	Pipe O.D mm / in	Max. Work Pressure MPa / psi	Bolt Size mm / in	Dimensions (mm / in)			Hole cut Dia mm / in	Weight kg / lbs
				A	B	C		
50x25 2"x1"	60.3x33.4 2.375x1.315	2.07 300	M12x60 1/2x2-1/2	63 2.48	64 2.52	130 5.12	38.1 1.50	0.7 1.5
50x32 2"x1 1/4"	60.3x42.2 2.375x1.660	2.07 300		63 2.48	74 2.91	130 5.12	44.5 1.75	0.8 1.8
50x40 2"x1 1/2"	60.3x48.3 2.375x1.900	2.07 300	M12x70 1/2x23/4	67 2.64	74 2.91	130 5.12	44.5 1.75	0.8 1.8
65x25 2 1/2"x1"	73x33.4 2.875x1.315	2.07 300		69 2.72	70 2.76	143 5.63	38.1 1.50	0.8 1.8
65x32 2 1/2"x1 1/4"	73x42.2 2.875x1.660	2.07 300	M12x70 1/2x23/4	72 2.83	77.5 3.05	143 5.63	44.5 1.75	0.9 2.0
65x40 2 1/2"x1 1/2"	73x48.3 2.875x1.900	2.07 300		72 2.83	84 3.31	143 5.63	50.8 2.00	0.9 2.0
65x25 3"O.Dx1"	76.1x33.4 2.875x1.315	2.07 300	M12x70 1/2x2-3/4	66 2.60	70 2.76	146 5.75	38.1 1.50	0.8 1.8
65x32 3"O.Dx1 1/4"	76.1x42.2 2.875x1.660	2.07 300		69 2.72	77.5 3.05	146 5.75	44.5 1.75	0.9 2.0
65x40 3"O.Dx1 1/2"	76.1x48.3 2.875x1.900	2.07 300	M12x70 1/2x2-3/4	69 2.72	84 3.31	146 5.75	50.8 2.00	0.9 2.0
80x25 3"x1"	88.9x33.4 3.500x1.315	2.07 300		73 2.87	70 2.76	160 6.30	38.1 1.50	0.9 2.0
80x32 3"x1 1/4"	88.9x42.2 3.500x1.660	2.07 300	M12x70 1/2x2-3/4	75 2.95	78 3.07	160 6.30	44.5 1.75	1.0 2.2
80x40 3"x1 1/2"	88.9x48.3 3.500x1.900	2.07 300		75 2.95	84.5 3.33	160 6.30	50.8 2.00	1.1 2.4
80x50 3"x2"	88.9x60.3 3.500x2.375	2.07 300		79 3.11	99.5 3.92	160 6.30	63.5 2.50	1.2 2.6



### Dimension

continued

Nominal Size DN / NPS	Pipe O.D mm / in	Max. Work Pressure MPa / psi	Bolt Size mm / in	Dimensions (mm / in)			Hole cut Dia mm / in	Weight kg / lbs
				A	B	C		
100x25 4"x1"	114.3x33.4 4.500x1.315	2.07 300		87 3.43	71 2.80	186 7.32	38.1 1.50	1.3 2.9
100x32 4"x1 1/4"	114.3x42.2 4.500x1.660	2.07 300		89 3.50	79 3.11	186 7.32	44.5 1.75	1.3 2.9
100x40 4"x1 1/2"	114.3x48.3 4.500x1.900	2.07 300		93 3.66	85 3.35	186 7.32	50.8 2.00	1.4 3.1
100x50 4"x2"	114.3x60.3 4.500x2.375	2.07 300	M12x75 1/2x3	97 3.82	100 3.94	186 7.32	63.5 2.50	1.5 3.3
100x65 4"x2 1/2"	114.3x76.1 4.500x2.875	2.07 300		97 3.82	112 4.41	186 7.32	70 2.76	1.8 4.0
100x65 4"x2 1/2"	114.3x76.1 4.500x2.875	2.07 300		97 3.82	112 4.41	186 7.32	70 2.76	1.9 4.2
100x80 4"x3"	111.3x88.9 4.500x3.500	2.07 300		100 3.94	129 5.08	186 7.32	88.9 3.50	2.5 5.5
125x25 5 1/2" O.D x 1"	139.7x33.4 5.500x1.315	2.07 300		103 4.06	72 2.83	220 8.66	38.1 1.50	1.8 4.0
125x32 5 1/2" O.D x 1 1/4"	139.7x42.2 5.500x1.660	2.07 300		106 4.17	90 3.54	220 8.66	44.5 1.75	2.0 4.4
125x40 5 1/2" O.D x 1 1/2"	139.7x48.3 5.500x1.900	2.07 300	M16x85 5/8x3-3/8	106 4.17	86 3.39	220 8.66	50.8 2.00	2.1 4.6
125x50 5 1/2" O.D x 2"	139.7x60.3 5.500x2.375	2.07 300		110 4.33	101 3.98	220 8.66	63.5 2.50	2.2 4.9
125x65 5 1/2" O.D x 2 1/2"	139.7x76.1 5.500x2.875	2.07 300		114 4.49	112 4.41	220 8.66	70 2.76	2.3 5.1
125x80 5 1/2" O.D x 3"	139.7x88.9 5.500x3.500	2.07 300		118 4.65	134 5.28	220 8.66	88.9 3.50	2.8 6.2
125x25 5"x1"	141.3x33.4 5.500x1.315	2.07 300		103 4.06	72 2.83	220 8.66	38.1 1.50	1.9 4.2
125x32 5"x1 1/4"	141.3x42.2 5.500x1.660	2.07 300		106 4.17	90 3.54	220 8.66	44.5 1.75	2.1 4.6
125x40 5"x1 1/2"	141.3x48.3 5.500x1.900	2.07 300	M16x85	106 4.17	86 3.39	220 8.66	50.8 2.00	2.2 4.9
125x50 5"x2"	141.3x60.3 5.500x2.375	2.07 300	5/8x3-3/8	110 4.33	101 3.98	220 8.66	63.5 2.50	2.3 5.1
125x65 5"x2 1/2"	141.3x73 5.500x2.875	2.07 300		114 4.49	112 4.41	220 8.66	70 2.76	2.4 5.3
125x80 5"x3"	141.3x88.9 5.500x3.500	2.07 300		118 4.65	134 5.28	220 8.66	88.9 3.50	2.9 6.4



### Dimension

continued

Nominal Size DN / NPS	Pipe O.D mm / in	Max. Work Pressure MPa / psi	Bolt Size mm / in	Dimensions (mm / in)			Hole cut Dia mm / in	Weight kg / lbs	
				A	B	C			
150x25	165.1x33.4	2.07	M16x85 5/8x3-3/8	114	73	250	38.1	2.3	
6 <sup>1</sup> / <sub>2</sub> "O.Dx1	6.500x1.315	300		4.49	2.87	9.84	1.50	5.1	
150x32	165.1x42.2	2.07		116	81	250	44.5	2.4	
6 <sup>1</sup> / <sub>2</sub> "O.Dx1 <sup>1</sup> / <sub>4</sub> "	6.500x1.660	300		4.57	3.19	9.84	1.75	5.3	
150x40	165.1x48.3	2.07		117	87	250	50.8	2.5	
6 <sup>1</sup> / <sub>2</sub> "O.Dx1 <sup>1</sup> / <sub>2</sub> "	6.500x1.900	300		4.61	3.43	9.84	2.00	5.5	
150x50	165.1x60.3	2.07		120	102	250	63.5	2.7	
6 <sup>1</sup> / <sub>2</sub> "O.Dx2"	6.500x2.375	300		4.72	4.02	9.84	2.50	6.0	
150x65	165.1x76.1	2.07		124	112	250	70	3.1	
6 <sup>1</sup> / <sub>2</sub> "O.Dx2 <sup>1</sup> / <sub>2</sub> "	6.500x2.875	300		4.88	4.41	9.84	2.76	6.8	
150x80	165.1x88.9	2.07		127	136	250	88.9	3.4	
6 <sup>1</sup> / <sub>2</sub> "O.Dx3"	6.500x3.500	300		5.00	5.35	9.84	3.50	7.5	
150x100	165.1x114.3	2.07		133	162	250	114.3	3.6	
6 <sup>1</sup> / <sub>2</sub> "ODx4	6.500x4.500	300		5.24	6.38	9.84	4.50	7.9	
150x25	168.3x33.4	2.07		M16x85 5/8x3-3/8	114	73	250	38.1	2.4
6"x1"	6.625x1.315	300			4.49	2.87	9.84	1.50	5.3
150x32	168.3x42.2	2.07			116	81	250	44.5	2.5
6"x1 <sup>1</sup> / <sub>4</sub> "	6.625x1.660	300			4.57	3.19	9.84	1.75	5.5
150x40	168.3x48.3	2.07			117	87	250	50.8	2.6
6"x1 <sup>1</sup> / <sub>2</sub> "	6.625x1.900	300			4.61	3.43	9.84	2.00	5.7
150x50	168.3x60.3	2.07	120		102	250	63.5	2.8	
6"x2"	6.625x2.375	300	4.72		4.02	9.84	2.50	6.2	
150x65	168.3x73	2.07	124		112	250	70	3.2	
6"x2 <sup>1</sup> / <sub>2</sub> "	6.625x2.875	300	4.88		4.41	9.84	2.76	7.1	
150x80	168.3x88.9	2.07	127		136	250	88.9	3.6	
6"x3"	6.625x3.500	300	5.00		5.35	9.84	3.50	7.9	
150x100	168.3x114.3	2.07	133		162	250	114.3	3.7	
6"x4"	6.625x4.500	300	5.24		6.38	9.84	4.50	8.2	
200x25	219.1x33.7	2.07	M20x115 3/4x4-1/2		145	73	316	38.1	3.5
8"x1"	8.625x1.315	300			5.71	2.87	12.44	1.50	7.7
200x32	219.1x42.2	2.07			145	81	316	44.5	3.6
8"x1 <sup>1</sup> / <sub>4</sub> "	8.625x1.660	300			5.71	3.19	12.44	1.75	7.9
200x40	219.1x48.3	2.07			145	87	316	50.8	3.8
8"x1 <sup>1</sup> / <sub>2</sub> "	8.625x1.900	300			5.71	3.43	12.44	2.00	8.4
200x50	219.1x60.3	2.07		148	102	316	63.5	4.0	
8"x2"	8.625x2.375	300		5.83	4.02	12.44	2.50	8.8	
200x65	219.1x73	2.07		152	112	316	70	4.4	
8"x3"	8.625x2.875	300		5.98	4.41	12.44	2.76	9.7	
200x65	219.1x76.1	2.07		152	112	316	70	4.4	
8"x3"O.D	8.625x3.000	300		5.98	4.41	12.44	2.76	9.7	
200x80	219.1x88.9	2.07		155	136	316	88.9	4.6	
8"x3"	8.625x3.500	300		6.10	5.35	12.44	3.50	10.1	
200x100	219.1x114.3	2.07		160	164	316	114.3	5.0	
8"x4"	8.625x4.500	300		6.30	6.46	12.44	4.50	11.0	