




- The coupling is ideally designed for use with Sch10 and Sch40 or BS steel pipe.
- The tongue and groove mechanism with build-in teeth provide rigidity in high flow and pressure pipeline.

**Material Specifications:**

- ◆ **Housing**  
Ductile iron conforming to ASTM A536 Gr. 65-45-12



- ◆ **Rubber Gaskets**

Gaskets Material		General Service Recommendations	Color code
	EPDM	EPDM is recognized as the most water resistant rubber available today. Good for cold & hot water up to 250°F (121°C), municipal water, waste water, deionized water. EPDM is not recommended for use with petroleum based oils and fuels, hydrocarbon solvents and aromatic hydrocarbons. EPDM gaskets for water services are not recommended for steam services unless coupling or components are accessible for frequent gasket replacement.	Black Green stripe
	NITRILE	NBR, Buna-N, and Nitrile all represent the same copolymer of butadiene and acrylonitrile (ACN), which is inherently resistant to hydraulic fluids, lubricating oils, transmission fluids and other non-polar petroleum based products and water less than 150°F (65°C). The higher the ACN content, the higher the resistance to oils and heat, but the lower elastic characteristics and compression set. NBR displays poor resistance to hot water and steam.	Black Orange stripe
	SILICON	Silicone (VMQ) FLO Grade "L" Silicone compound features high temperature range stability and low temperature flexibility. Recommended for dry heat and air without hydrocarbons up to 350°F (177°C). Silicone compounds are used in many food and medical applications as they do not impart odor or taste. Not recommended for hot water or steam services.	White

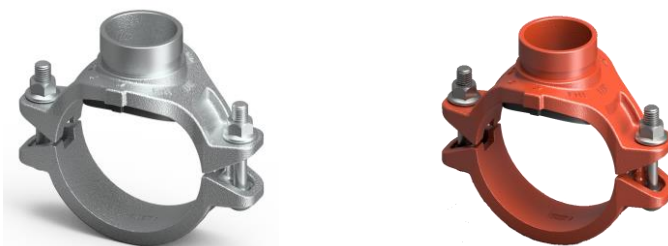
**Note:** Only EPDM has FM approved & UL/ULC Listed.

- ◆ **Bolts & Nuts**

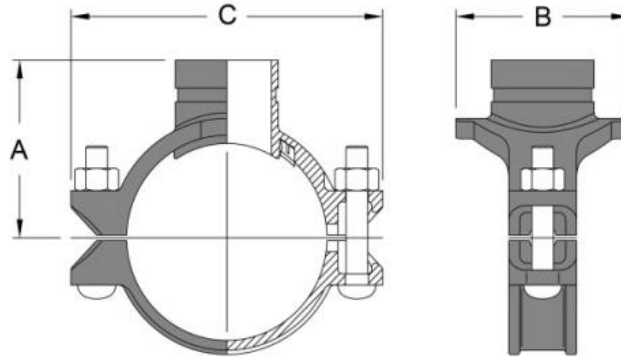
Heat treated, zinc electroplated, or galvanized oval neck track head bolts and hex nuts make of carbon steel in accordance with ASTM A183 (Metric in accordance with ISO 898).

**Surface Finish:**

Epoxy Coatings in RAL3000 red, available with hot dipped galvanized finish or orange painted.



**MT1 - Mechanical Tee**



◆ Grooved Outlet



**Dimension**

Nominal Size DN / NPS	Pipe O.D mm / in	Max. Work Pressure MPa / psi	Bolt Size mm / in	Dimensions (mm / in)			Hole cut Dia mm / in	Weight kg / lbs
				A	B	C		
50x25 2"x1"	60.3x33.4 2.375x1.315	2.07 300	M12x60 1/2x2-1/2	67 2.64	64 2.52	130 5.12	38.1 1.50	1.0 2.2
50x32 2"x1 1/4"	60.3x42.2 2.375x1.660	2.07 300		67 2.64	74 2.91	130 5.12	44.5 1.75	1.0 2.2
50x40 2"x1 1/2"	60.3x48.3 2.375x1.900	2.07 300	M12x70 1/2x23/4	68 2.68	74 2.91	130 5.12	44.5 1.75	1.1 2.4
65x25 2 1/2"x1"	73x33.4 2.875x1.315	2.07 300		74 2.91	70 2.76	143 5.63	38.1 1.50	1.1 2.4
65x32 2 1/2"x1 1/4"	73x42.2 2.875x1.660	2.07 300	M12x70 1/2x23/4	74 2.91	77.5 3.05	143 5.63	44.5 1.75	1.1 2.4
65x40 2 1/2"x1 1/2"	73x48.3 2.875x1.900	2.07 300		74 2.91	84 3.31	143 5.63	50.8 2.00	1.2 2.6
65x25 3"O.Dx1"	76.1x33.4 2.875x1.315	2.07 300	M12x70 1/2x2-3/4	76 2.99	70 2.76	146 5.75	38.1 1.50	1.1 2.4
65x32 3"O.Dx1 1/4"	76.1x42.2 2.875x1.660	2.07 300		76 2.99	77.5 3.05	146 5.75	44.5 1.75	1.1 2.4
65x40 3"O.Dx1 1/2"	76.1x48.3 2.875x1.900	2.07 300	M12x70 1/2x2-3/4	76 3.23	84 2.76	146 6.30	50.8 1.50	1.2 2.4
80x25 3"x1"	88.9x33.4 3.500x1.315	2.07 300		82 3.23	70 2.76	160 6.30	38.1 1.50	1.1 2.4
80x32 3"x1 1/4"	88.9x42.2 3.500x1.660	2.07 300	M12x70 1/2x2-3/4	82 3.23	78 3.07	160 6.30	44.5 1.75	1.1 2.4
80x40 3"x1 1/2"	88.9x48.3 3.500x1.900	2.07 300		82 3.23	84.5 3.33	160 6.30	50.8 2.00	1.2 2.6
80x50 3"x2"	88.9x60.3 3.500x2.375	2.07 300		82 3.23	99.5 3.92	160 6.30	63.5 2.50	1.3 2.9



### Dimension

continued

Nominal Size DN / NPS	Pipe O.D mm / in	Max. Work Pressure MPa / psi	Bolt Size mm / in	Dimensions (mm / in)			Hole cut Dia mm / in	Weight kg / lbs	
				A	B	C			
100x25 4"x1"	114.3x33.4 4.500x1.315	2.07 300	M12x75 1/2x3	96 3.78	71 2.80	186 7.32	38.1 1.50	1.6 3.5	
100x32 4"x1 1/4"	114.3x42.2 4.500x1.660	2.07 300		96 3.78	79 3.11	186 7.32	44.5 1.75	1.6 3.5	
100x40 4x1 1/2"	114.3x48.3 4.500x1.900	2.07 300		96 3.78	85 3.35	186 7.32	50.8 2.00	1.7 3.7	
100x50 4"x2"	114.3x60.3 4.500x2.375	2.07 300		96 3.78	100 3.94	186 7.32	63.5 2.50	1.9 4.2	
100x65 4"x2 1/2"	114.3x76.1 4.500x2.875	2.07 300		97 3.82	112 4.41	186 7.32	70 2.76	2.0 4.4	
100x65 4"x2 1/2"	114.3x76.1 4.500x2.875	2.07 300		97 3.82	112 4.41	186 7.32	70 2.76	2.0 4.4	
100x80 4"x3"	111.3x88.9 4.500x3.500	2.07 300		97 3.82	129 5.08	186 7.32	88.9 3.50	2.2 4.9	
125x25 5 1/2" O.D x 1"	139.7x33.4 5.500x1.315	2.07 300		M16x85 5/8x3-3/8	111 4.37	72 2.83	220 8.66	38.1 1.50	1.8 4.0
125x32 5 1/2" O.D x 1 1/4"	139.7x42.2 5.500x1.660	2.07 300			111 4.37	90 3.54	220 8.66	44.5 1.75	1.9 4.2
125x40 5 1/2" O.D x 1 1/2"	139.7x48.3 5.500x1.900	2.07 300			111 4.37	86 3.39	220 8.66	50.8 2.00	2.0 4.4
125x50 5 1/2" O.D x 2"	139.7x60.3 5.500x2.375	2.07 300			111 4.37	101 3.98	220 8.66	63.5 2.50	2.1 4.6
125x65 5 1/2" O.D x 2 1/2"	139.7x76.1 5.500x2.875	2.07 300			112 4.41	112 4.41	220 8.66	70 2.76	2.2 4.9
125x80 5 1/2" O.D x 3"	139.7x88.9 5.500x3.500	2.07 300	112 4.41		134 5.28	220 8.66	88.9 3.50	2.6 5.7	
125x25 5"x1"	141.3x33.4 5.500x1.315	2.07 300	M16x85 5/8x3-3/8		111 4.37	72 2.83	220 8.66	38.1 1.50	1.9 4.2
125x32 5"x1 1/4"	141.3x42.2 5.500x1.660	2.07 300			111 4.37	90 3.54	220 8.66	44.5 1.75	2.0 4.4
125x40 5"x1 1/2"	141.3x48.3 5.500x1.900	2.07 300			111 4.37	86 3.39	220 8.66	50.8 2.00	2.1 4.6
125x50 5"x2"	141.3x60.3 5.500x2.375	2.07 300			111 4.37	101 3.98	220 8.66	63.5 2.50	2.2 4.9
125x65 5"x2 1/2"	141.3x73 5.500x2.875	2.07 300			112 4.41	112 4.41	220 8.66	70 2.76	2.3 5.1
125x80 5"x3"	141.3x88.9 5.500x3.500	2.07 300			112 4.41	134 5.28	220 8.66	88.9 3.50	2.7 6.0



### Dimension

continued

Nominal Size DN / NPS	Pipe O.D mm / in	Max. Work Pressure MPa / psi	Bolt Size mm / in	Dimensions (mm / in)			Hole cut Dia mm / in	Weight kg / lbs		
				A	B	C				
150x25 6 1/2" O.D x 1"	165.1x33.4 6.500x1.315	2.07 300	M16x85 5/8x3-3/8	124 4.88	73 2.87	250 9.84	38.1 1.50	2.2 4.9		
150x32 6 1/2" O.D x 1 1/4"	165.1x42.2 6.500x1.660	2.07 300		124 4.88	81 3.19	250 9.84	44.5 1.75	2.3 5.1		
150x40 6 1/2" O.D x 1 1/2"	165.1x48.3 6.500x1.900	2.07 300		124 4.88	87 3.43	250 9.84	50.8 2.00	2.4 5.3		
150x50 6 1/2" O.D x 2"	165.1x60.3 6.500x2.375	2.07 300		124 4.88	102 4.02	250 9.84	63.5 2.50	2.6 5.7		
150x65 6 1/2" O.D x 2 1/2"	165.1x76.1 6.500x2.875	2.07 300		124 4.88	112 4.41	250 9.84	70 2.76	2.9 6.4		
150x80 6 1/2" O.D x 3"	165.1x88.9 6.500x3.500	2.07 300		124 4.88	136 5.35	250 9.84	88.9 3.50	3.2 7.1		
150x100 6 1/2" O.D x 4"	165.1x114.3 6.500x4.500	2.07 300		126 4.96	162 6.38	250 9.84	114.3 4.50	3.3 7.3		
150x25 6" x 1"	168.3x33.4 6.625x1.315	2.07 300		M16x85 5/8x3-3/8	124 4.88	73 2.87	250 9.84	38.1 1.50	2.3 5.1	
150x32 6" x 1 1/4"	168.3x42.2 6.625x1.660	2.07 300			124 4.88	81 3.19	250 9.84	44.5 1.75	2.4 5.3	
150x40 6" x 1 1/2"	168.3x48.3 6.625x1.900	2.07 300			124 4.88	87 3.43	250 9.84	50.8 2.00	2.5 5.5	
150x50 6" x 2"	168.3x60.3 6.625x2.375	2.07 300			124 4.88	102 4.02	250 9.84	63.5 2.50	2.7 6.0	
150x65 6" x 2 1/2"	168.3x73 6.625x2.875	2.07 300			124 4.88	112 4.41	250 9.84	70 2.76	3.0 6.6	
150x80 6" x 3"	168.3x88.9 6.625x3.500	2.07 300			124 4.88	136 5.35	250 9.84	88.9 3.50	3.4 7.5	
150x100 6" x 4"	168.3x114.3 6.625x4.500	2.07 300			126 4.96	162 6.38	250 9.84	114.3 4.50	3.5 7.7	
200x25 8" x 1"	219.1x33.7 8.625x1.315	2.07 300			M20x115 3/4x4-1/2	152 5.98	73 2.87	316 12.4	38.1 1.50	3.5 7.7
200x32 8" x 1 1/4"	219.1x42.2 8.625x1.660	2.07 300				152 5.98	81 3.19	316 12.4	44.5 1.75	3.6 7.9
200x40 8" x 1 1/2"	219.1x48.3 8.625x1.900	2.07 300				152 5.98	87 3.43	316 12.4	50.8 2.00	3.8 8.4
200x50 8" x 2"	219.1x60.3 8.625x2.375	2.07 300				152 5.98	102 4.02	316 12.4	63.5 2.50	4.0 8.8
200x65 8" x 3"	219.1x73 8.625x2.875	2.07 300				152 5.98	112 4.41	316 12.4	70 2.76	4.2 9.3
200x65 8" x 3" O.D	219.1x76.1 8.625x3.000	2.07 300				152 5.98	112 4.41	316 12.4	70 2.76	4.2 9.3
200x80 8" x 3"	219.1x88.9 8.625x3.500	2.07 300	152 5.98			136 5.35	316 12.4	88.9 3.50	4.4 9.7	
200x100 8" x 4"	219.1x114.3 8.625x4.500	2.07 300	152 5.98			164 6.46	316 12.4	114.3 4.50	4.8 10.6	