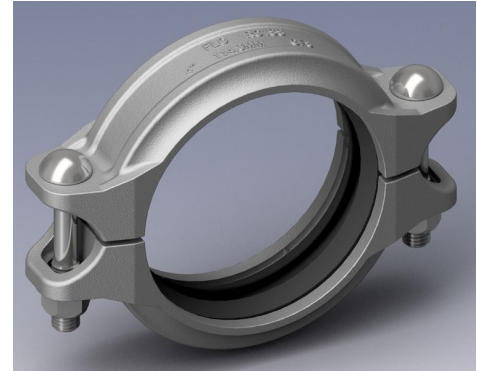


## FC1SS Stainless Steel Flexible Couplings

- The model FC1SS stainless steel flexible coupling is ideally designed for use with Sch5s to Sch40s or BS stainless steel pipe.
- Designed to provide durable joint for grooved end stainless steel piping systems in a variety of applications.



### Material Specifications

#### Housing:

Type CF8 (304) stainless steel to ASTM A351, A743 or A744 Gr. CF8

Type CF8M (316) stainless steel to ASTM A351, A743 or A744 Gr. CF8M

Other material available upon request

#### Rubber Gaskets:

##### Standard:

Grade "E" EPDM (Color code: Green stripe)

Temperature range -30°F to +230°F (-34°C to +110°C). Recommended for cold and hot water service within the specified temperature range plus a variety of dilute acids, oil-free air and many chemical services. NOT RECOMMENDED FOR PETROLEUM SERVICES.

##### Option:

Grade "T" Nitrile (Color code: Orange stripe)

Temperature range -20°F to +180°F (-29°C to +82°C). Recommended for petroleum products, air with oil vapors, vegetable and mineral oils within the specified temperature range. Not recommended for hot water services over +150°F (+66°C) or for hot dry air over +140°F (+60°C).

Grade "O" Fluoroelastomer (Color code: Blue stripe)

Temperature range +20°F to +300°F (-7°C to +149°C). Recommended for many oxidizing acids, petroleum oils, halogenated hydrocarbons, lubricants, hydraulic fluids, organic liquids and air with hydrocarbons.

Grade "L" Silicone (Color code: Red stripe)

Temperature range -30°F to +350°F (-34 to +177°C). Recommended for dry heat, air without hydrocarbons to +350°F (+177°C) and certain chemical services. FIT products silicone gaskets are recommended for fire protection dry systems, all systems operating below 0°F (-18°C), plus dry heat, air without hydrocarbons, certain chemical services, and water to +160°F (71°C).

#### Bolts & Nuts:

Type 316 stainless steel oval neck track bolts to ASTM A193 B8M and Type 304 stainless steel heavy duty nuts to ASTM A194 B8.

Other material available upon request.

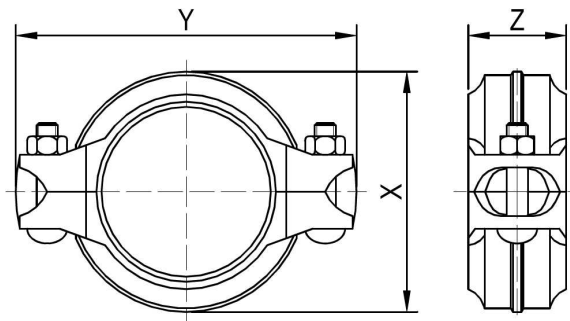
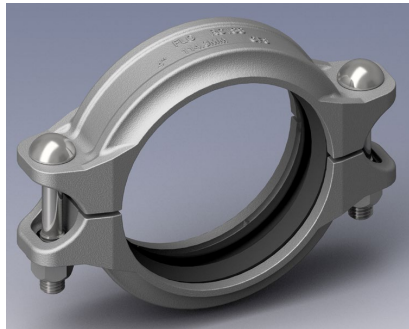
FlowCom strongly recommends to use the pipe rolls designed for the roll grooving of stainless steel pipe.

Warning: Piping systems must always be depressurized and drained before attempting disassembly and/or removal of any components.

# GROOVED COUPLINGS



## FC1SS Stainless Steel Flexible Couplings



### Dimension

Part Number	Size		Pipe O.D.		Pipe end separation		X		Y		Z		Deflection Degree(°)	Bolt Size		Weight	
	in.	mm	mm	in.	mm	in.	mm	in.	mm	in.	mm	in.		mm	lbs	kg	
FC1SS-027	3/4	20	26.7	0-0.09	0-2.2	1.77	45	3.70	94	1.74	44	4.0	3/8X2	M10X50	1.2	0.6	
FC1SS-033	1	25	33.4	0-0.09	0-2.2	2.05	52	3.98	101	1.74	44	3.8	3/8X2	M10X50	1.3	0.6	
FC1SS-042	1 1/4	32	42.2	0-0.09	0-2.2	2.40	61	4.29	109	1.74	44	3.0	3/8X2	M10X50	1.4	0.6	
FC1SS-048	1 1/2	40	48.3	0-0.09	0-2.2	2.64	67	4.49	114	1.74	44	2.9	3/8X2	M10X50	1.5	0.7	
FC1SS-060	2	50	60.3	0-0.09	0-2.2	3.19	81	5.08	129	1.78	45	2.5	3/8X2	M10X50	1.8	0.8	
FC1SS-073	2 1/2	65	73.0	0-0.09	0-2.2	3.82	97	5.63	143	1.82	46	2.3	3/8X2	M10X50	2.2	1.0	
FC1SS-076	3OD	65	76.1	0-0.09	0-2.2	3.94	100	5.75	146	1.82	46	2.2	3/8X2	M10X50	2.2	1.0	
FC1SS-089	3	80	88.9	0-0.10	0-2.6	4.49	114	6.38	162	1.85	47	2.0	3/8X2	M10X50	2.5	1.1	
FC1SS-114	4	100	114.3	0-0.10	0-2.6	5.63	143	7.84	199	1.89	48	1.8	1/2X2 3/4	M12X70	4.0	1.8	
FC1SS-140	5 1/2OD	125	139.7	0-0.10	0-2.6	6.73	171	9.02	229	1.93	49	1.6	1/2X2 3/4	M12X70	4.9	2.2	
FC1SS-141	5	125	141.3	0-0.10	0-2.6	6.77	172	9.06	230	1.93	49	1.6	1/2X2 3/4	M12X70	4.9	2.2	
FC1SS-165	6 1/2OD	150	165.1	0-0.10	0-2.6	7.80	198	10.1	257	1.93	49	1.6	1/2X2 3/4	M12X70	5.7	2.6	
FC1SS-168	6	150	168.3	0-0.10	0-2.6	7.91	201	10.2	260	1.93	49	1.6	1/2X2 3/4	M12X70	5.7	2.6	
FC1SS-219	8	200	219.1	0-0.19	0-4.9	10.2	259	12.8	326	2.33	59	1.3	5/8X3 1/2	M16X90	10	4.5	
FC1SS-273	10	250	273.0	0-0.19	0-4.9	12.4	315	15.8	400	2.48	63	1.0	3/4 X4	M20X100	15	6.9	
FC1SS-324	12	300	323.9	0-0.19	0-4.9	14.5	369	17.9	455	2.48	63	0.8	3/4 X4	M20X100	18	8.2	

### Performance Data

Part Number	Size		Pipe O.D.	Sch.40S (Roll or Cut Groove)				Sch.10S (Roll Groove)				Sch.5S (Roll Groove)			
				Max. Working Pressure		Max. End Load		Max. Working Pressure		Max. End Load		Max. Working Pressure		Max. End Load	
				PSI	MPa	lbs	kN	PSI	MPa	lbs	kN	PSI	MPa	lbs	kN
RC1SS-027	3/4	20	26.7	750	5.2	651	2.91	600	4.2	521	2.35	400	2.8	347	1.57
RC1SS-033	1	25	33.4	750	5.2	1019	4.56	600	4.2	815	3.68	400	2.8	543	2.45
RC1SS-042	1 1/4	32	42.2	750	5.2	1626	7.27	600	4.2	1301	5.87	400	2.8	867	3.92
RC1SS-048	1 1/2	40	48.3	750	5.2	2130	9.53	600	4.2	1704	7.70	400	2.8	1136	5.13
RC1SS-060	2	50	60.3	750	5.2	3320	14.85	600	4.2	2656	11.99	400	2.8	1771	8.00
RC1SS-073	2 1/2	65	73.0	600	4.2	3892	17.58	500	3.5	3244	14.65	350	2.4	2271	10.04
RC1SS-076	3OD	65	76.1	600	4.2	4230	19.10	500	3.5	3525	15.92	350	2.4	2468	10.92
RC1SS-089	3	80	88.9	600	4.2	5773	26.07	500	3.5	4811	21.73	350	2.4	3367	14.90
RC1SS-114	4	100	114.3	500	3.5	7952	35.91	500	3.5	7952	35.91	350	2.4	5567	24.63
RC1SS-140	5 1/2OD	125	139.7	400	2.8	9503	42.92	400	2.8	9503	42.92	300	2.1	7128	32.19
RC1SS-141	5	125	141.3	400	2.8	9722	43.91	400	2.8	9722	43.91	300	2.1	7292	32.93
RC1SS-165	6 1/2OD	150	165.1	400	2.8	13273	59.94	400	2.8	13273	59.94	300	2.1	9955	44.96
RC1SS-168	6	150	168.3	400	2.8	13793	62.29	400	2.8	13793	62.29	300	2.1	10345	46.72
RC1SS-219	8	200	219.1	300	2.1	17532	79.18	300	2.1	17532	79.18	200	1.4	11688	52.78
RC1SS-273	10	250	273.0	300	2.1	27219	122.92	300	2.1	27219	122.92	200	1.4	18146	81.95
RC1SS-324	12	300	323.9	300	2.1	38315	173.03	300	2.1	38315	173.03	200	1.4	25543	115.36