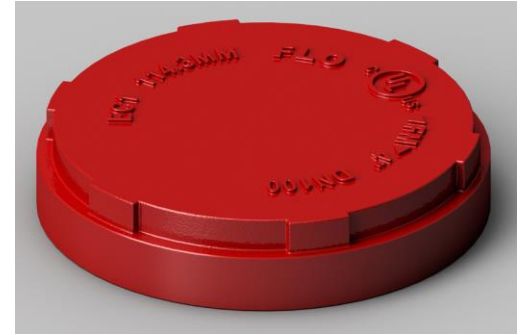


EC1 - End Cap

- ◆ NPS1" (DN25) through NPS12" (DN300)
- ◆ Material: ASTM A536 Gr. 65-45-12
- ◆ Groove dimension according: ANSI/AWWA C606
- ◆ Finish: Epoxy Coatings in RAL3000 red, available with hot dipped galvanized finish or orange painted.



Hot dipped galvanized

Orange painted

Dimension

Nominal Size DN / NPS	Pipe O.D mm / in	Max. Work Pressure MPa / psi	EE mm / in	Weight kg / lbs
25	33.4	2.07	24.5	0.1
1"	1.315	300	0.96	0.22
32	42.2	2.07	24.5	0.18
1 1/4"	1.660	300	0.96	0.40
40	48.3	2.07	25	0.2
1 1/2"	1.900	300	0.98	0.44
50	60.3	2.07	25	0.22
2"	2.375	300	0.98	0.49
65	73.0	2.07	25	0.3
2 1/2"	2.875	300	0.98	0.66
65	76.1	2.07	25	0.35
3" O.D	3.000	300	0.98	0.77
80	88.9	2.07	25	0.5
3"	3.500	300	0.98	1.10
100	114.3	2.07	25	0.75
4"	4.500	300	0.98	1.65
125	139.7	2.07	25	1.2
5 1/2" O.D	5.500	300	0.98	2.65
125	141.3	2.07	25	1.2
5"	5.563	300	0.98	2.65
150	165.1	2.07	25	1.75
6 1/2" O.D	6.500	300	0.98	3.86
150	168.3	2.07	25	1.75
6"	6.625	300	0.98	3.86
200	219.1	2.07	30	3.95
8"	8.625	300	1.18	8.71
250	273.0	2.07	32	6.7
10"	10.750	300	1.26	14.77
300	323.9	2.07	32	10.6
12"	12.750	300	1.26	23.37

