



## Riser Assemblies

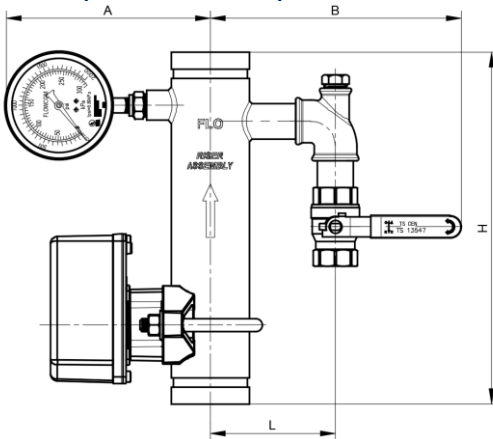
### CRA --- Riser Assemblies

- Riser Assemblies (Basic Trim) includes a pressure gauge, drain (ball) valve, and dedicated waterflow switch.
- Compact, lightweight design for easy installation.
- Pressure rating: 300 PSI (20.7 bar) maximum water working pressure.
- Fabricated Sch.40 steel riser body with cut grooves and red epoxy finish.
- Gauge check valve allows for easy replacement of pressure gauge.
- Vertical or horizontal installation.
- Optional:
  - ✦ Available with Test and Drain Valve in K2.8(40), K4.2(60), K5.6(80), K8.0(115) orifice sizes.
  - ✦ Available with Pressure Relief Valve (PRV), with pressure rated at 185 psi (13 bar).
  - ✦ Available with Solenoid Valve (24 VDC, normally closed energize to open) for remote testing, with the Cv value that is equivalent to orifice sizes of Test and Drain Valve.
  - ✦ All Riser Assemblies available with attached butterfly valve at the inlet as an option.



Riser body Size		Drain Size		Riser body Size		Drain Size	
in.	DN	in.	DN	in.	DN	in.	DN
2	50	1	25	4	100	2	50
2½	65	1¼	32	6	150	2	50
3	80	1¼	32	8	200	2	50

**Basic (With Ball Valve)**

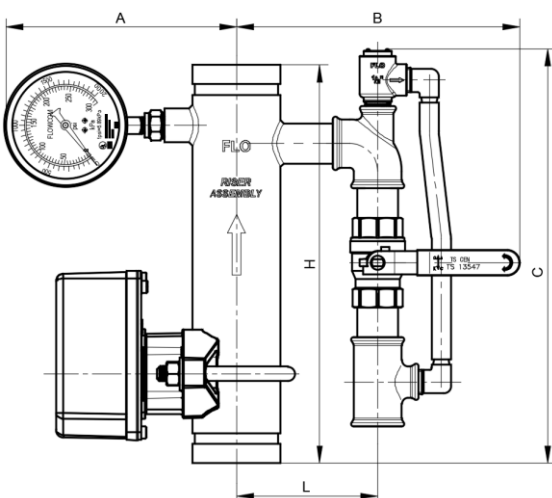


**Dimensions**

Part Number	SIZE		H	L	A	B				
	in.	DN								
CRA01-060B	2	50	13	330	4.41	112	7.32	186	9.06	230
CRA01-073B	2½	65	13	330	4.92	125	7.60	193	9.65	245
CRA01-076B	2½	65	13	330	5.00	127	7.63	194	9.72	247
CRA01-089B	3	80	13	330	5.24	133	7.87	200	9.96	253
CRA01-114B	4	100	13	330	6.89	175	8.39	213	12.40	315
CRA01-165B	6	150	13	330	8.58	218	9.37	238	14.09	358
CRA01-168B	6	150	13	330	8.66	220	9.45	240	14.17	360
CRA01-219B	8	200	13	330	9.76	248	10.47	266	15.27	388

Note: If ordered with a butterfly valve, change Part number CRA01-XXXX to CRA02-XXXX.

**With Ball Valve and Pressure Relief Valve (PRV)**



**Dimensions**

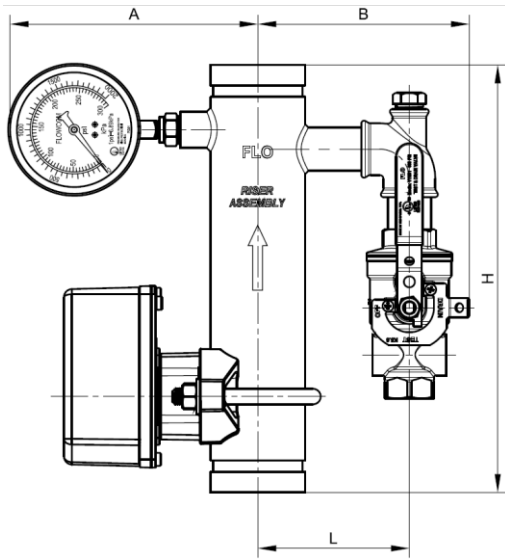
Part Number	SIZE		H	L	A	B	C					
	in.	DN										
CRA01-060B1	2	50	13	330	4.41	112	7.32	186	9.06	230	13.78	350
CRA01-073B1	2½	65	13	330	4.92	125	7.60	193	9.65	245	13.78	350
CRA01-076B1	2½	65	13	330	5.00	127	7.63	194	9.72	247	13.78	350
CRA01-089B1	3	80	13	330	5.24	133	7.87	200	9.96	253	13.78	350
CRA01-114B1	4	100	13	330	6.89	175	8.39	213	12.40	315	13.58	345
CRA01-165B1	6	150	13	330	8.58	218	9.37	238	14.09	358	13.58	345
CRA01-168B1	6	150	13	330	8.66	220	9.45	240	14.17	360	13.58	345
CRA01-219B1	8	200	13	330	9.76	248	10.47	266	15.27	388	13.39	340

Note: If ordered with a butterfly valve, change Part number CRA01-XXXX to CRA02-XXXX.



## Riser Assemblies

### With Test and Drain Valve

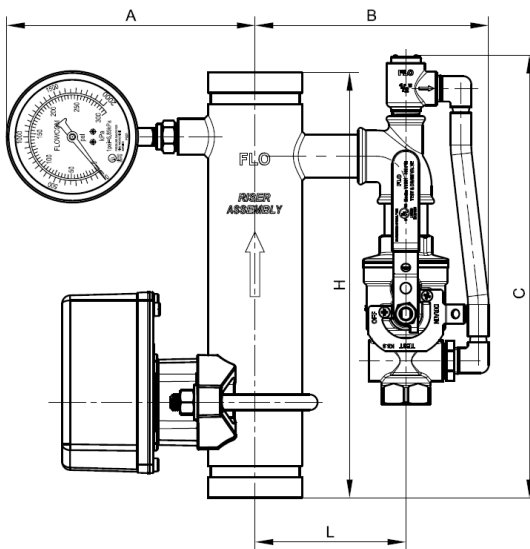


#### Dimensions

Part Number	SIZE		H		L		A		B	
	in.	DN	in.	mm	in.	mm	in.	mm	in.	mm
CRA01-060T	2	50	13	330	4.41	112	7.32	186	6.22	158
CRA01-073T	2½	65	13	330	4.92	125	7.60	193	6.73	171
CRA01-076T	2½	65	13	330	5.00	127	7.63	194	6.81	173
CRA01-089T	3	80	13	330	5.24	133	7.87	200	7.05	179
CRA01-114T	4	100	13	330	6.89	175	8.39	213	8.94	227
CRA01-165T	6	150	13	330	8.58	218	9.37	238	10.67	271
CRA01-168T	6	150	13	330	8.66	220	9.45	240	10.74	273
CRA01-219T	8	200	13	330	9.76	248	10.47	266	11.81	300

Note: If ordered with a butterfly valve, change Part number CRA01-XXXX to CRA02-XXXX.

### With Test and Drain Valve and Pressure Relief Valve (PRV)

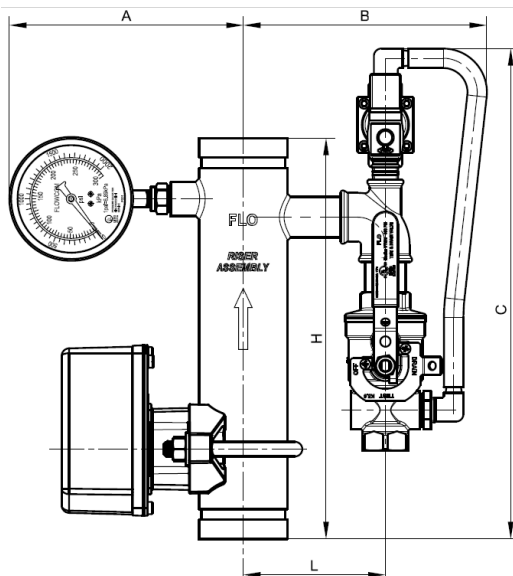


#### Dimensions

Part Number	SIZE		H		L		A		B		C	
	in.	DN	in.	mm	in.	mm	in.	mm	in.	mm	in.	mm
CRA01-060T1	2	50	13	330	4.41	112	7.32	186	6.93	176	13.78	350
CRA01-073T1	2½	65	13	330	4.92	125	7.60	193	7.44	189	13.78	350
CRA01-076T1	2½	65	13	330	5.00	127	7.63	194	7.48	190	13.78	350
CRA01-089T1	3	80	13	330	5.24	133	7.87	200	7.76	197	13.78	350
CRA01-114T1	4	100	13	330	6.89	175	8.39	213	9.80	249	13.58	345
CRA01-165T1	6	150	13	330	8.58	218	9.37	238	11.57	294	13.58	345
CRA01-168T1	6	150	13	330	8.66	220	9.45	240	11.65	296	13.58	345
CRA01-219T1	8	200	13	330	9.76	248	10.47	266	12.68	322	13.39	340

Note: If ordered with a butterfly valve, change Part number CRA01-XXXX to CRA02-XXXX.

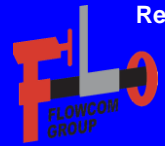
### With Test and Drain Valve and Solenoid Valve



#### Dimensions

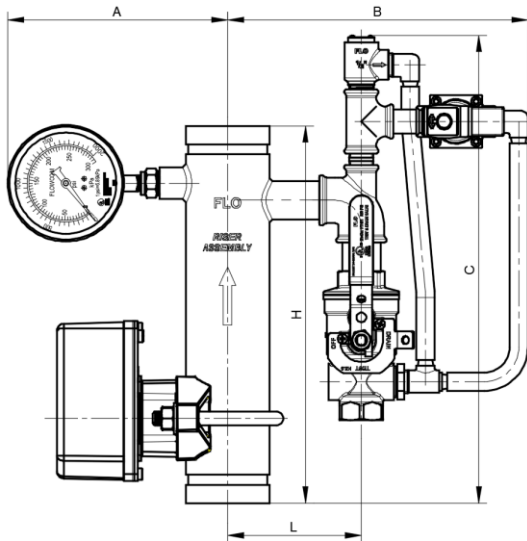
Part Number	SIZE		H		L		A		B		C	
	in.	DN	in.	mm	in.	mm	in.	mm	in.	mm	in.	mm
CRA01-060T2	2	50	13	330	4.41	112	7.32	186	7.72	196	16.14	410
CRA01-073T2	2½	65	13	330	4.92	125	7.60	193	8.23	209	16.14	410
CRA01-076T2	2½	65	13	330	5.00	127	7.63	194	8.27	210	16.14	410
CRA01-089T2	3	80	13	330	5.24	133	7.87	200	8.54	217	16.14	410
CRA01-114T2	4	100	13	330	6.89	175	8.39	213	10.59	269	15.94	405
CRA01-165T2	6	150	13	330	8.58	218	9.37	238	12.36	314	15.94	405
CRA01-168T2	6	150	13	330	8.66	220	9.45	240	12.44	316	15.94	405
CRA01-219T2	8	200	13	330	9.76	248	10.47	266	13.46	342	15.75	400

Note: If ordered with a butterfly valve, change Part number CRA01-XXXX to CRA02-XXXX.



## Riser Assemblies

With Test and Drain Valve and Solenoid Valve and Pressure Relief Valve (PRV)

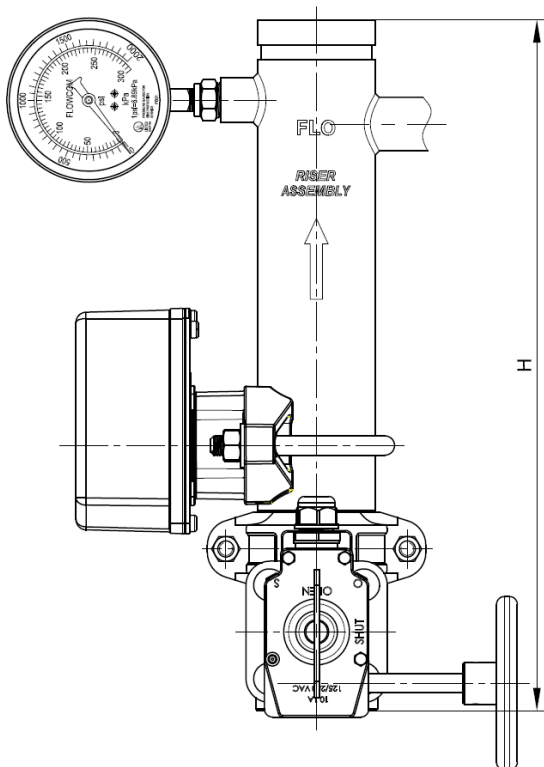


### Dimensions

Part Number	SIZE		H		L		A		B		C	
	in.	DN	in.	mm	in.	mm	in.	mm	in.	mm	in.	mm
CRA01-060T3	2	50	13	330	4.41	112	7.32	186	10.12	257	17.13	435
CRA01-073T3	2½	65	13	330	4.92	125	7.60	193	10.63	270	17.13	435
CRA01-076T3	2½	65	13	330	5.00	127	7.63	194	10.71	272	17.13	435
CRA01-089T3	3	80	13	330	5.24	133	7.87	200	10.94	278	17.13	435
CRA01-114T3	4	100	13	330	6.89	175	8.39	213	12.60	320	16.93	430
CRA01-165T3	6	150	13	330	8.58	218	9.37	238	14.29	363	16.93	430
CRA01-168T3	6	150	13	330	8.66	220	9.45	240	14.37	365	16.93	430
CRA01-219T3	8	200	13	330	9.76	248	10.47	266	15.47	393	16.73	425

Note: If ordered with a butterfly valve, change Part number CRA01-XXXX to CRA02-XXXX.

### Overall dimension for butterfly valve option



SIZE	H	
	in.	mm
2	16.26	413
2½	16.93	430
2½	16.93	430
3	16.93	430
4	17.64	448
6	18.98	482
6	18.98	482
8	18.50	470