

## Phụ Kiện Nối Rãnh Bằng Thép Không Gỉ

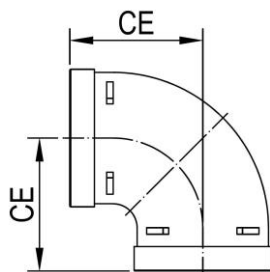
- Các model E1SS, E2SS, T1SS, CA1SS đều được đúc bằng phương pháp đúc mẫu chảy.
- Model RT1SS được gia công từ các đoạn ống hàn từng đoạn.
- Model CR1SS được gia công bằng phương pháp ép đùn.



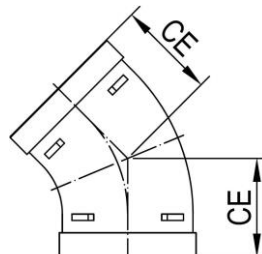
### Thông Số Kỹ Thuật Vật Liệu

Thép không gỉ loại CF8 (304): theo tiêu chuẩn ASTM A351 Gr. CF8 hoặc ASTM A312 Gr. TP304

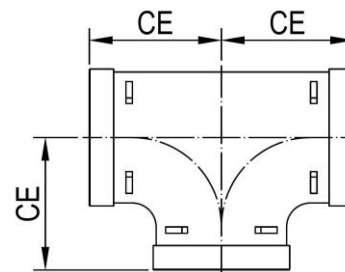
Thép không gỉ loại CF8M (316): theo tiêu chuẩn ASTM A351 Gr. CF8M hoặc ASTM A312 Gr. TP316



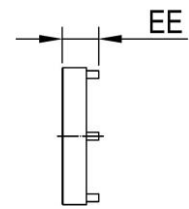
E1SS 90° Elbow



E2SS 45° Elbow



T1SS Tee



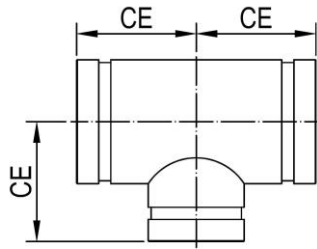
CA1SS Cap

### Kích Thước

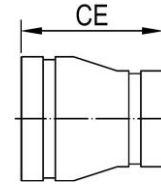
Size	SE1SS & E1SS 90° Elbow					E2SS 45° Elbow					ST1SS & T1SS Tee					CA1SS Cap				
	Part Number	CE		Wt.		Part Number	CE		Wt.		Part Number	CE		Wt.		Part Number	EE		Wt.	
In. mm		in.	mm	lbs	kg		in.	mm	lbs	kg		in.	mm	lbs	kg		in.	mm	lbs	kg
1 25	E1SS-033	2.25	57	0.5	0.2	E2SS-033	1.75	45	0.4	0.2	T1SS-033	2.25	57	0.9	0.4	CA1SS-033	0.90	23	0.2	0.1
1¼ 32	E1SS-042	2.75	70	0.9	0.4	E2SS-042	1.75	45	0.7	0.3	T1SS-042	2.75	70	1.5	0.7	CA1SS-042	0.90	23	0.2	0.1
1½ 40	E1SS-048	2.75	70	0.9	0.4	E2SS-048	1.75	45	0.9	0.4	T1SS-048	2.75	70	1.8	0.8	CA1SS-048	0.90	23	0.4	0.2
2 50	SE1SS-060	2.75	70	1.3	0.6	E2SS-060	2.00	51	1.1	0.5	ST1SS-060	3.25	83	2.4	1.1	CA1SS-060	0.90	23	0.7	0.3
2½ 65	SE1SS-073	3.00	76	1.8	0.8	E2SS-073	2.25	57	2.2	1.0	ST1SS-073	3.75	95	5.5	2.5	CA1SS-073	0.90	23	1.1	0.5
3OD 65	SE1SS-076	3.00	76	1.8	0.8	E2SS-076	2.25	57	2.2	1.0	ST1SS-076	3.75	95	5.5	2.5	CA1SS-076	0.90	23	1.1	0.5
3 80	SE1SS-089	3.38	86	2.2	1.0	E2SS-089	2.50	64	2.6	1.2	ST1SS-089	4.25	108	6.4	2.9	CA1SS-089	0.90	23	1.5	0.7
4 100	SE1SS-114	4.00	102	3.6	1.6	E2SS-114	3.00	76	3.5	1.6	ST1SS-114	5.00	127	7.5	3.4	CA1SS-114	1.00	25	2.9	1.3
5½OD 125	SE1SS-140	4.88	124	6.0	2.7	E2SS-140	3.25	83	6.2	2.8	ST1SS-140	5.50	140	11	5.0	CA1SS-140	1.00	25	4.2	1.9
5 125	SE1SS-141	4.88	124	6.2	2.8	E2SS-141	3.25	83	6.4	2.9	ST1SS-141	5.50	140	11	5.2	CA1SS-141	1.00	25	4.2	1.9
6½OD 150	SE1SS-165	5.50	140	7.7	3.5	E2SS-165	3.50	89	9.0	4.1	ST1SS-165	6.50	165	20	9.0	CA1SS-165	1.00	25	5.7	2.6
6 150	SE1SS-168	5.50	140	8.0	3.6	E2SS-168	3.50	89	9.2	4.2	ST1SS-168	6.50	165	21	9.7	CA1SS-168	1.00	25	5.7	2.6
8 200	SE1SS-219	6.81	173	16	7.3	E2SS-219	4.25	108	15	6.9	ST1SS-219	7.75	197	33	15	CA1SS-219	1.22	31	13	6.0
10 250	E1SS-273	9.00	229	33	15	E2SS-273	4.75	121	36	17	T1SS-273	9.00	229	67	31	CA1SS-273	1.22	31	22	10
12 300	E1SS-324	10.0	254	49	22	E2SS-324	5.25	133	50	23	T1SS-324	10.0	254	95	43	CA1SS-324	1.22	31	31	14

# PHỤ KIỆN NỐI RÃNH

## Phụ Kiện Nối Rãnh Bằng Thép Không Gỉ



RT1SS Tê Giảm



CR1SS Giảm Đồng Tâm

### Kích Thước

Size		RT1SS Tê Giảm				CR1SS Giảm Đồng Tâm					
In.	mm	Part Number	CE		Wt.		Part Number	CE		Wt.	
			in.	mm	lbs	kg		in.	mm	lbs	kg
1½ X 1	40 X 25						CR1SS-048-033	3.94	100	0.7	0.3
1½ X 1¼	40 X 32						CR1SS-048-042	4.13	105	0.7	0.3
2 X 1	50 X 25	RT1SS-060-033	2.76	70	1.8	0.8	CR1SS-060-033	4.37	111	0.7	0.3
2 X 1¼	50 X 32	RT1SS-060-042	2.76	70	1.8	0.8	CR1SS-060-042	4.37	111	0.9	0.4
2 X 1½	50 X 40	RT1SS-060-048	2.76	70	2.6	1.2	CR1SS-060-048	4.37	111	0.9	0.4
2½ X 1	65 X 25	RT1SS-073-033	2.99	76	3.8	1.7	CR1SS-073-033	4.92	125	1.1	0.5
2½ X 1¼	65 X 32	RT1SS-073-042	2.99	76	3.9	1.8	CR1SS-073-042	4.92	125	1.1	0.5
2½ X 1½	65 X 40	RT1SS-073-048	2.99	76	3.9	1.8	CR1SS-073-048	4.92	125	1.1	0.5
2½ X 2	65 X 50	RT1SS-073-060	2.99	76	4.1	1.9	CR1SS-073-060	4.92	125	1.2	0.6
3OD X 1	65 X 25	RT1SS-076-033	2.99	76	3.8	1.7	CR1SS-076-033	4.92	125	1.1	0.5
3OD X 1¼	65 X 32	RT1SS-076-042	2.99	76	3.9	1.8	CR1SS-076-042	4.92	125	1.1	0.5
3OD X 1½	65 X 40	RT1SS-076-048	2.99	76	3.9	1.8	CR1SS-076-048	4.92	125	1.1	0.5
3OD X 2	65 X 50	RT1SS-076-060	2.99	76	4.1	1.9	CR1SS-076-060	4.92	125	1.3	0.6
3 X 1¼	80 X 32	RT1SS-089-042	3.39	86	4.4	2.0	CR1SS-089-042	4.92	125	1.3	0.6
3 X 1½	80 X 40	RT1SS-089-048	3.39	86	5.6	2.5	CR1SS-089-048	4.92	125	1.3	0.6
3 X 2	80 X 50	RT1SS-089-060	3.39	86	5.8	2.6	CR1SS-089-060	4.92	125	1.5	0.7
3 X 2½	80 X 65	RT1SS-089-073	3.39	86	6.0	2.7	CR1SS-089-073	4.92	125	1.8	0.8
3 X 3OD	80 X 65	RT1SS-089-076	3.39	86	6.0	2.7	CR1SS-089-076	4.92	125	1.8	0.8
4 X 2	100 X 50	RT1SS-114-060	4.02	102	8.8	4.0	CR1SS-114-060	5.31	135	2.5	1.1
4 X 2½	100 X 65	RT1SS-114-073	4.02	102	9.0	4.1	CR1SS-114-073	5.31	135	2.7	1.2
4 X 3OD	100 X 65	RT1SS-114-076	4.02	102	9.0	4.1	CR1SS-114-076	5.31	135	2.7	1.2
4 X 3	100 X 80	RT1SS-114-089	4.02	102	9.9	4.5	CR1SS-114-089	5.31	135	3.3	1.5
5½OD X 3	125 X 80	RT1SS-140-089	4.88	124	12.8	5.8	CR1SS-140-089	5.31	135	4.0	1.8
5½OD X 4	125 X 100	RT1SS-140-114	4.88	124	13.6	6.2	CR1SS-140-114	6.38	162	4.4	2.0
5 X 3	125 X 80	RT1SS-141-089	4.88	124	12.8	5.8	CR1SS-141-089	6.38	162	4.0	1.8
5 X 4	125 X 100	RT1SS-141-114	4.88	124	13.6	6.2	CR1SS-141-114	6.38	162	4.4	2.0
6½OD X 3	150 X 80	RT1SS-165-089	5.51	140	20	9.2	CR1SS-165-089	6.89	175	6.0	2.7
6½OD X 4	150 X 100	RT1SS-165-114	5.51	140	20	9.2	CR1SS-165-114	6.89	175	6.2	2.8
6½OD X 5½OD	150 X 125	RT1SS-165-140	5.51	140	20	9.2	CR1SS-165-140	6.89	175	6.4	2.9
6 X 3	150 X 80	RT1SS-168-089	5.51	140	20	9.2	CR1SS-168-089	6.89	175	6.0	2.7
6 X 4	150 X 100	RT1SS-168-114	5.51	140	20	9.2	CR1SS-168-114	6.89	175	6.2	2.8
6 X 5	150 X 125	RT1SS-168-141	5.51	140	20	9.2	CR1SS-168-141	6.89	175	6.4	2.9
8 X 4	200 X 100	RT1SS-219-114	6.81	173	31	14	CR1SS-219-114	8.94	227	11	4.9
8 X 5½OD	200 X 125	RT1SS-219-140	6.81	173	35	16	CR1SS-219-140	8.94	227	12	5.3
8 X 5	200 X 125	RT1SS-219-141	6.81	173	35	16	CR1SS-219-141	8.94	227	12	5.3
8 X 6½OD	200 X 150	RT1SS-219-165	6.81	173	37	17	CR1SS-219-165	8.94	227	12	5.5
8 X 6	200 X 150	RT1SS-219-168	6.81	173	37	17	CR1SS-219-168	8.94	227	12	5.5
10 X 6½OD	250 X 150	RT1SS-273-165	9.02	229	60	27	CR1SS-273-165	10.24	260	20	9.0
10 X 6	250 X 150	RT1SS-273-168	9.02	229	60	27	CR1SS-273-168	10.24	260	20	9.0
10 X 8	250 X 200	RT1SS-273-219	9.02	229	62	28	CR1SS-273-219	10.24	260	22	10
12 X 8	300 X 200	RT1SS-324-219	10.0	254	85	39	CR1SS-324-219	11.4	290	33	15
12 X 10	300 X 250	RT1SS-324-273	10.0	254	87	40	CR1SS-324-273	11.4	290	37	17