

### LDS01 - Load-Distributing Sleeves

**Size Range:** 1" through 24"

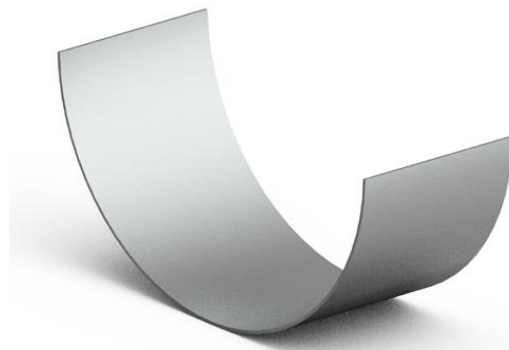
**Material:** Carbon steel

**Finish:** Galvanization

**Service:**

- For large pipe diameters or spacing between supports it is mandatory that insulation clamps with PU shells are fitted with load-distributing sleeves for improved load distribution.
- The use of load distributing sleeves for pipe diameters of 2" and more is recommended.

**Ordering:** Specify Part Number



Part Number	Nominal Pipe Size		D							
			Insulation thickness							
	in.	mm	25mm		38mm		50mm		75mm	
		in.	mm	in.	mm	in.	mm	in.	mm	
LDS01-033	1"	DN25	3.29	83.5	6.65	169				
LDS01-042	1 1/4"	DN32	3.62	92	7.20	183				
LDS01-048	1 1/2"	DN40	3.88	98.5	7.58	192.5				
LDS01-060	2"	DN50	4.35	110.5	8.31	211				
LDS01-073	2 1/2"	DN65			5.87	149	6.81	173		
LDS01-089	3"	DN80			6.50	165	7.44	189		
LDS01-114	4"	DN100			7.50	190.5	8.44	214.5		
LDS01-141	5"	DN125			8.56	217.5	9.51	241.5		
LDS01-168	6"	DN150			9.63	244.5	10.57	268.5		
LDS01-219	8"	DN200			11.61	295	12.56	319		
LDS01-273	10"	DN250			13.74	349	14.69	373		
LDS01-324	12"	DN300			15.75	400	16.69	424		
LDS01-356	14"	DN350			16.30	414	17.93	455.5		
LDS01-406	16"	DN400			19.00	482.5	19.94	506.5		
LDS01-457	18"	DN450			20.98	533	21.93	557		
LDS01-508	20"	DN500			22.99	584	23.94	608		
LDS01-559	22"	DN550					25.94	659	27.91	709
LDS01-610	24"	DN600					27.95	710	29.92	760

