

PR04 - Roller Stand

Size Range: 2" through 24"

Material: Carbon steel

Finish: Hot-dip galvanizing, or Galvanization

Service:

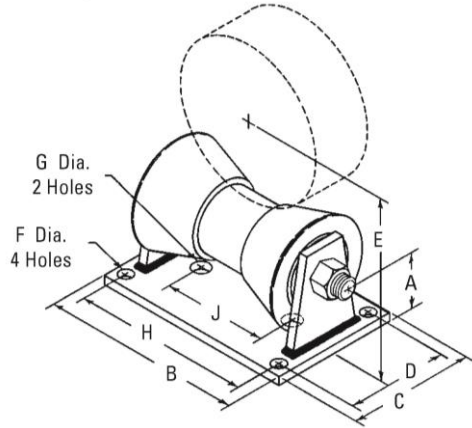
- For support of piping that expands and contracts longitudinally and where vertical adjustment is not necessary.
- If roll is to support bare pipe, select size from nominal pipe size.
- If used with pipe covering protection saddle, see Part Number: CPS01

Approvals:

- Complies with Manufacturer's Standardization Society MSS SP-58 & SP-69 (Type44).

Ordering: Specify Part Number

2 to 3 1/2 Roller Stand shown



Part Number (HDG)	Nominal Pipe Size		A		B		C		D		E		F (Dia.)	
	in.	mm	in.	mm	in.	mm	in.	mm	in.	mm	in.	mm	in.	mm
PR04H-050/080	2	DN50	1.75	44.5	8.38	213	6	152	4.00	102	3.688	94	0.50	13
	2 1/2	DN65									3.94	100		
	3	DN80									4.25	108		
PR04H-100/150	4	DN100	2.06	52.5	9.88	251	6	152	4.25	108	5.00	127	0.50	13
	5	DN125									5.56	141		
	6	DN150									6.06	154		
PR04H-200/250	8	DN200	3.44	87.5	8.63	219	8	203	5.00	127	8.81	224	0.63	16
	10	DN250									9.88	251		
	12	DN300									11.44	290		
PR04H-300/350	14	DN350	3.88	98.5	10.94	278	8	203	6.00	152	12.06	306	0.75	19
	16	DN400									13.63	346		
	18	DN450									14.69	373		
PR04H-400/500	20	DN500	4.25	108	12.38	314	10	254	6.50	165	15.69	398	0.81	21
	22	DN550									16.73	425		
	24	DN600									17.72	450		
PR04H-750	30	DN750	5.13	130	17.00	432	10.75	273	8.00	203	21.75	553	1.06	27
	36	DN900									25.31	643		
	40	DN1000									27.32	694		
PR04H-900/1100	42	DN1050	5.75	146	20.00	508	12.00	305	9.00	229	28.31	719	1.19	30
	44	DN1100									30.31	770		

Part Number (HDG)	Nominal Pipe Size		G (Dia.)		H		J		Max. Rec. Load		Approx. Wt./100	
	in.	mm	in.	mm	in.	mm	in.	mm	lbs	kN	lbs	kg
PR04H-050/080	2	DN50	1.00	26	3.44	87.5	6.38	162	390	1.73	508	230.4
	2 1/2	DN65										
	3	DN80										
PR04H-100/150	4	DN100	1.00	26	4.69	119	7.88	200	950	4.22	631	286.2
	5	DN125										
	6	DN150										
PR04H-200/250	8	DN200	1.00	26	7.00	178	4.00	102	2100	9.34	1271	576.5
	10	DN250										
	12	DN300										
PR04H-300/350	14	DN350	1.00	26	9.06	230	5.75	146	3075	13.68	1994	904.5
	16	DN400										
	18	DN450										
PR04H-400/500	20	DN500	1.00	26	10.25	260	6.75	171	4980	22.15	3423	1552.7
	22	DN550										
	24	DN600										
PR04H-750	30	DN750	1.00	26	14.25	362	10.00	254	7500	33.36	7132	3235.1
	36	DN900										
	40	DN1000										
PR04H-900/1100	42	DN1050	1.00	26	17.00	432	12.00	305	12000	53.37	10386	4711.1
	44	DN1100										