

PR01 - Roller Hanger

Size Range: 2" through 24"

Material: Carbon steel & Cast iron

Finish: Hot-dip galvanizing, other finish available upon request

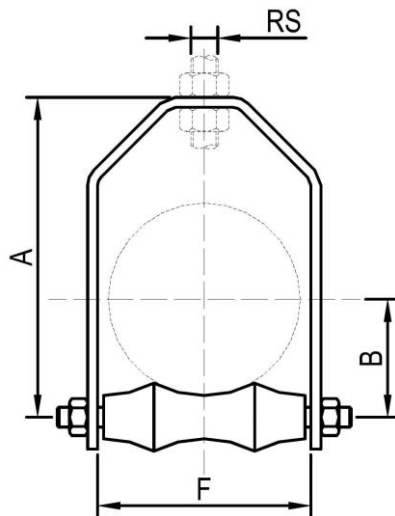
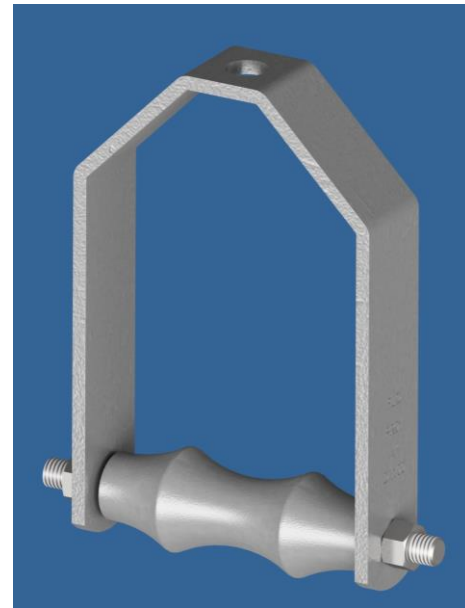
Service:

- For suspension of pipe from a single rod where horizontal Movement may occur because of expansion or contraction

Approvals:

- Complies with Federal Specification A-A-1192A (Type 43) WW-H-171-E (Type 44) and MSS-SP-58 (Type 43).

Ordering: Specify Part Number



| Part Number (HDG) | Nominal Pipe Size | | RS | | A | | B | | F | | WT. | | Max. Rec. Load | |
|-------------------|-------------------|-------|-----|-----|-------|-----|-------|-----|-------|-----|------|------|----------------|------|
| | in. | mm | in. | mm | in. | mm | in. | mm | in. | mm | lb | kg | lbs | kN |
| PR01H-050 | 2 | DN50 | 3/8 | M10 | 4.38 | 111 | 1.63 | 41 | 2.75 | 70 | 1.1 | 0.48 | 150 | 0.67 |
| PR01H-065 | 2½ | DN65 | 1/2 | M12 | 5.00 | 127 | 2.00 | 51 | 3.25 | 83 | 1.3 | 0.59 | 225 | 1.00 |
| PR01H-080 | 3 | DN80 | 1/2 | M12 | 6.38 | 162 | 2.25 | 57 | 3.88 | 99 | 1.6 | 0.71 | 310 | 1.38 |
| PR01H-100 | 4 | DN100 | 5/8 | M16 | 7.50 | 190 | 2.75 | 70 | 4.94 | 125 | 2.8 | 1.28 | 475 | 2.11 |
| PR01H-125 | 5 | DN125 | 5/8 | M16 | 8.63 | 219 | 3.50 | 89 | 6.00 | 152 | 4.4 | 2.01 | 685 | 3.05 |
| PR01H-150 | 6 | DN150 | 3/4 | M20 | 10.25 | 260 | 4.00 | 102 | 7.13 | 181 | 6.0 | 2.71 | 780 | 3.47 |
| PR01H-200 | 8 | DN200 | 7/8 | M22 | 12.75 | 324 | 5.13 | 130 | 9.05 | 230 | 11.4 | 5.18 | 780 | 3.47 |
| PR01H-250 | 10 | DN250 | 7/8 | M22 | 15.00 | 381 | 6.38 | 162 | 11.25 | 286 | 17.4 | 7.88 | 965 | 4.30 |
| PR01H-300 | 12 | DN300 | 7/8 | M22 | 17.50 | 445 | 7.50 | 191 | 13.25 | 337 | 24.6 | 11.2 | 1200 | 5.34 |
| PR01H-350 | 14 | DN350 | 1 | M24 | 19.00 | 480 | 8.38 | 213 | 14.50 | 368 | 36 | 16.4 | 1200 | 5.34 |
| PR01H-400 | 16 | DN400 | 1 | M24 | 20.75 | 527 | 9.50 | 241 | 16.50 | 419 | 44 | 20.0 | 1200 | 5.34 |
| PR01H-450 | 18 | DN450 | 1 | M24 | 23.75 | 603 | 10.50 | 267 | 18.50 | 470 | 54 | 24.5 | 1400 | 6.23 |
| PR01H-500 | 20 | DN500 | 1¼ | M30 | 26.00 | 660 | 11.63 | 295 | 20.50 | 521 | 74 | 33.6 | 1600 | 7.12 |
| PR01H-550 | 22 | DN550 | 1½ | M39 | 30.31 | 770 | 12.60 | 320 | 22.44 | 570 | | | 1600 | 7.12 |
| PR01H-600 | 24 | DN600 | 1½ | M39 | 32.50 | 827 | 13.81 | 351 | 24.63 | 626 | 126 | 57.2 | 1600 | 7.12 |