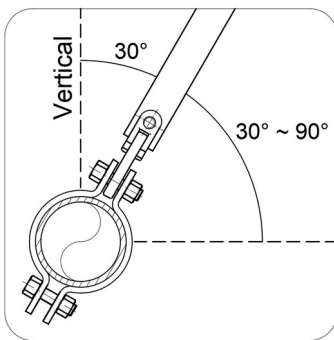
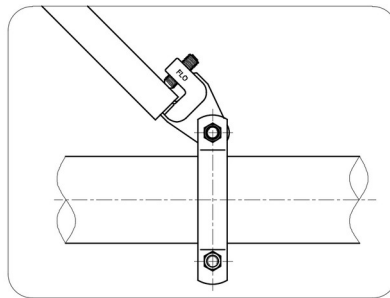


SSB0301C – Bracing Clamp

- **Function** : Braces pipe against sway or seismic disturbance. Versatile design provides ability to function in lateral or longitudinal direction at any angle. Designed to use 1" or 1-1/4" SCH 40 pipe as brace member.
- **Size**: To be braced 1" to 8" pipe.
- **Brace members**: 1" Sch.40 pipe for 1" ~ 8" system piping or 1-1/4" Sch.40 pipe for 2.5" ~ 8" system piping.
- **Finish**: Zinc plated. Other finishes upon request.
- **Material**: Carbon steel
- **Installation**: Place SSB0301C around pipe to be braced, and position attachment as needed. Tighten clamping bolts. Insert bracing pipe into the attachment jaw and tighten the break-off bolt until the hex head breaks off.
- **Approvals**: Comply with NFPA 13 and GB 50981.
UL/ULC Listed



Lateral



Longitudinal

