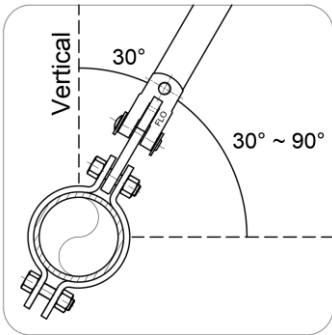


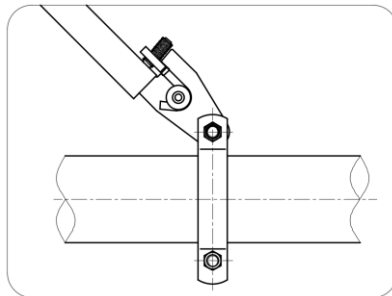
SWAY BRACE COMPONENTS

SSB0301 – Bracing Clamp

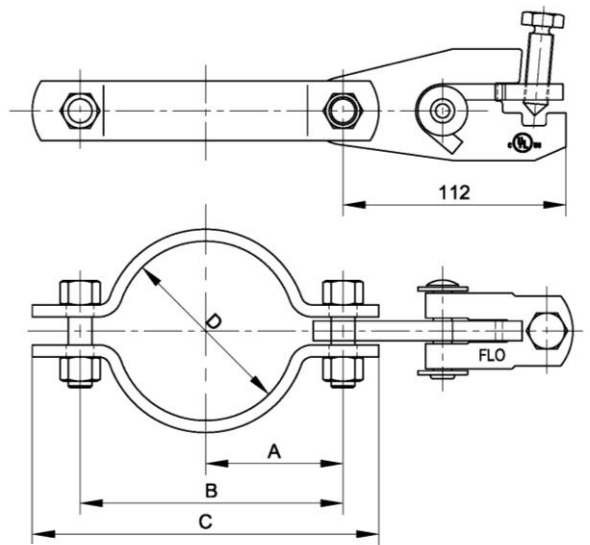
- **Function:** Braces pipe against sway or seismic disturbance. Versatile design provides ability to function in lateral or longitudinal direction at any angle.
- **Size:** To be braced 1” to 8” pipe.
- **Brace members:** 1” Sch.40 pipe for 1” ~ 8” system piping or 1-1/4” Sch.40 pipe for 2.5” ~ 8” system piping.
- **Finish:** Zinc plated. Other finishes upon request.
- **Material:** Carbon steel
- **Installation:** Place SSB0301 around pipe to be braced, and position attachment as needed. Tighten clamping bolts. Insert bracing pipe into the attachment jaw and tighten the break-off bolt until the hex head breaks off.
- **Approvals:** Comply with NFPA 13 and GB 50981
UL/ULC Listed.



Lateral



Longitudinal



Dimensions

Pipe Size		D		A		B		C		Wt.	
NPS	DN	in.	mm	in.	mm	in.	mm	in.	mm	lbs.	kg
1"	25	1.32	33.5	1.63	41.5	3.03	77	4.45	113	2.43	1.10
1-1/4"	32	1.69	43	1.83	46.5	3.43	87	4.84	123	2.51	1.14
1-1/2"	40	1.93	49	1.97	50	3.70	94	5.12	130	2.60	1.18
2"	50	2.40	61	2.17	55	4.09	104	5.51	140	2.73	1.24
2-1/2"	65	2.99	76	2.46	62.5	4.69	119	6.10	155	2.95	1.34
3"	80	3.54	90	2.72	69	5.20	132	6.61	168	3.09	1.40
4"	100	4.53	115	3.25	82.5	6.26	159	7.68	195	3.42	1.55
5"	125	5.55	141	3.84	97.5	7.68	195	9.09	231	3.79	1.72
6"	150	6.61	168	4.33	110	8.66	220	10.08	256	4.17	1.89
8"	200	8.66	220	5.71	145	11.42	290	13.15	334	8.46	3.84



Max. Design Load

Pipe Size		UL Max. Design Load
NPS	DN	lbs. (kN)
1"	25	1000 (4.45)
1-1/4"	32	1000 (4.45)
1-1/2"	40	1000 (4.45)
2"	50	1000 (4.45)
2-1/2"	65	1000 (4.45)
3"	80	1000 (4.45)
4"	100	1000 (4.45)
5"	125	1600 (7.12)
6"	150	1600 (7.12)
8"	200	2015 (8.96)