

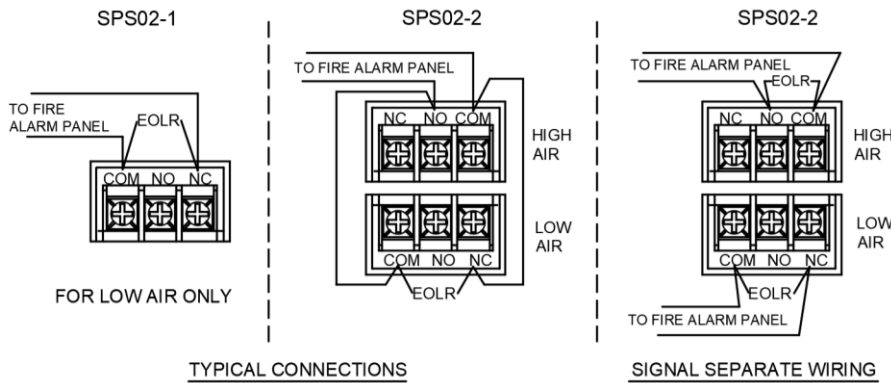
Fire Alarm Equipment

SPS02 – Supervisory Pressure Switch

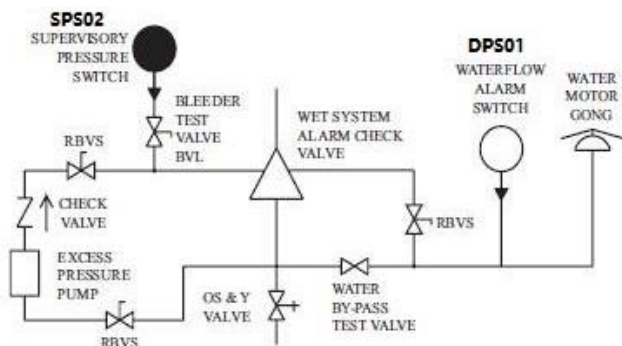
- Maximum System Pressure: 300 PSI (2.07 MPa)
- Factory Setting: SPS02-1 operates upon decreasing pressure at 110 psi
SPS02-2 operates upon increasing pressure at 130 psi and upon decreasing pressure at 110 psi
- Differential: Approximately 3 psi @ 25 psi, 8 psi @ 175 psi
- Maximum Adjustment Pressure Range: 25 to 175 psi
- Contact Ratings: SPS02-1: One set SPDT (Form C)
SPS02-2: Two sets of SPDT (Form C)
10.1 Amps at 125 / 250 VAC
2.0 Amps at 24 VDC
- Operating Temperature Range: -40 °F to 160 °F (-40 °C to 71 °C)
- Enclosure Rating: NEMA 4- suitable for indoor/outdoor use
- Conduit Entrances: One opening for 1/2" conduit
- Pressure Connection: Nylon 1/2" NPT Male
- Service Use: Automatic Sprinkler: NFPA-13
One or Two Family Dwelling: NFPA-13D
Residential Occupancies up to 4 stories: NFPA-13R
National Fire Alarm Code: NFPA-72
- Cover Material: Aluminum Die-casting. Alternative Material Plastic



Field Typical Electrical Connections:



Typical Sprinkler Applications:



Model and Size:

Model	Description	Weight(kg)
SPS02-1	One set SPDT contacts	0.5
SPS02-2	Two sets SPDT contacts	0.5

