



PIPE CLAMPS

SP01 - Standard Pipe Clamps

Size Range: 1/2" through 24"

Material: Carbon steel

Finish: Plain or Galvanized, other finish available upon request.

Service: Recommended for suspension of cold pipe lines or hot lines where no insulation is required.

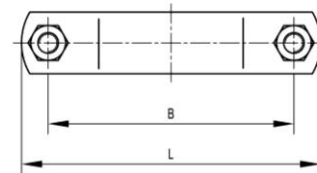
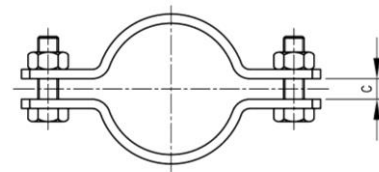
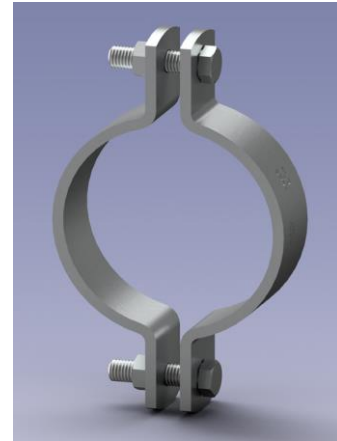
Maximum Temperature: Plain 750°F; Galvanized 450°F.

Approvals:

- Complies with Federal Specification A-A-1192A (Type 4) WW-H-171-E (Type 4) , MSS-SP-69 & SP-58 (Type 4).
- FM approved (Sizes 3/4" through 8")
- UL/ULC Listed (Sizes 1/2" through 8")

Ordering: Specify Part Number

Note: The "C" gap dimension ensures adequate clearance at the top attachment point for a weldless eye nut or other appropriate rod attachment. This gap may or may not be present on the bottom portion of the clamp.



Part Number	Nominal Pipe Size		L		B		C		Bolt Size		Max. Load For Service Temp.	
											650°F(343°C)	750°F(399°C)
											lbs (N)	lbs (N)
SP01-015	1/2	DN15	3.70	94	2.52	64	3/8	10	3/8	M10	500(2230)	445(1980)
SP01-020	3/4	DN20	4.06	103	2.87	73	3/8	10	3/8	M10	500(2230)	445(1980)
SP01-025	1	DN25	4.29	109	3.11	79	3/8	10	3/8	M10	500(2230)	445(1980)
SP01-032	1 1/4	DN32	4.69	119	3.50	89	3/8	10	3/8	M10	500(2230)	445(1980)
SP01-040	1 1/2	DN40	5.04	128	3.86	98	3/8	10	3/8	M10	800(3560)	715(3180)
SP01-050	2	DN50	5.43	138	4.25	108	3/8	10	3/8	M10	1040(4630)	930(4140)
SP01-065	2 1/2	DN65	5.98	152	4.80	122	1/2	13	3/8	M10	1040(4630)	930(4140)
SP01-080	3	DN80	6.69	170	5.51	140	1/2	13	3/8	M10	1040(4630)	930(4140)
SP01-090	3 1/2	DN90	7.17	182	5.98	152	1/2	13	3/8	M10	1040(4630)	930(4140)
SP01-100	4	DN100	8.43	214	7.01	178	1/2	13	3/8	M10	1040(4630)	930(4140)
SP01-125	5	DN125	9.41	239	7.99	203	1/2	13	1/2	M12	1040(4630)	930(4140)
SP01-150	6	DN150	10.43	265	9.02	229	1/2	13	1/2	M12	1615(7190)	1440(6410)
SP01-200	8	DN200	13.74	349	12.01	305	5/8	16	5/8	M16	1615(7190)	1440(6410)
SP01-250	10	DN250	15.47	393	13.74	349	5/8	16	5/8	M16	2490(11080)	2220(9880)
SP01-300	12	DN300	17.72	450	15.98	406	5/8	16	5/8	M16	2490(11080)	2220(9880)
SP01-350	14	DN350	19.09	485	17.36	441	3/4	20	5/8	M16	2490(11080)	2220(9880)
SP01-400	16	DN400	22.36	568	20.00	508	3/4	20	3/4	M20	2490(11080)	2220(9880)
SP01-450	18	DN450	24.37	619	22.00	559	3/4	20	3/4	M20	3060(13620)	2730(12150)
SP01-500	20	DN500	26.38	670	24.00	610	3/4	20	3/4	M20	3060(13620)	2730(12150)
SP01-600	24	DN600	31.77	807	29.00	737	1	25	1	M24	3060(13620)	2730(12150)