

SH21 - Swivel Hanger (For copper tube)

Size Range : 1/2" through 6"

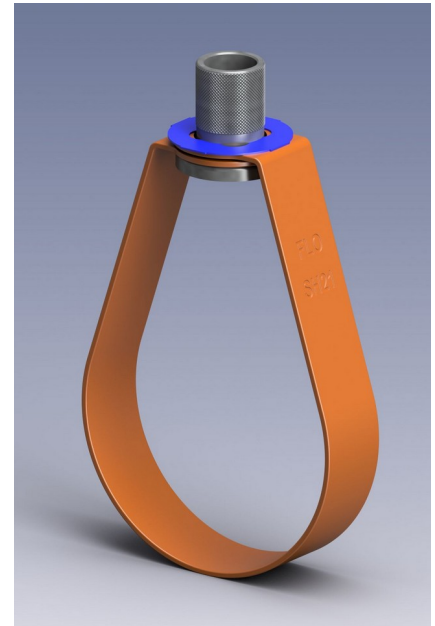
Material : Carbon steel

Finish : Copper color epoxy coated

Service :

- Recommend for suspension of non-insulated stationary pipe line
- Complies with Federal Specification WW-H-171-E (Type 10) and MSS-SP-69 (Type 10).

Ordering : Specify Part Number



| Part Number | Nominal Pipe Size | | RS | | A | | E | | C | | Wt. | | Max. Rec. Load | |
|-------------|-------------------|-------|-----|-----|------|-----|------|----|------|-----|------|------|----------------|------|
| | in. | mm | in. | mm | in. | mm | in. | mm | in. | mm | lb | kg | lbs | N |
| SH21-015 | 1/2 | DN15 | 3/8 | M10 | 2.80 | 71 | 1.30 | 33 | 1.81 | 46 | 0.09 | 0.04 | 300 | 1334 |
| SH21-020 | 3/4 | DN20 | 3/8 | M10 | 3.03 | 77 | 1.30 | 33 | 1.97 | 50 | 0.09 | 0.04 | 300 | 1334 |
| SH21-025 | 1 | DN25 | 3/8 | M10 | 3.19 | 81 | 1.18 | 30 | 1.97 | 50 | 0.10 | 0.05 | 300 | 1334 |
| SH21-032 | 1 1/4 | DN32 | 3/8 | M10 | 3.31 | 84 | 1.02 | 26 | 1.97 | 50 | 0.10 | 0.05 | 300 | 1334 |
| SH21-040 | 1 1/2 | DN40 | 3/8 | M10 | 3.78 | 96 | 1.26 | 32 | 2.28 | 58 | 0.11 | 0.05 | 300 | 1334 |
| SH21-050 | 2 | DN50 | 3/8 | M10 | 4.02 | 102 | 0.98 | 25 | 2.28 | 58 | 0.11 | 0.05 | 300 | 1334 |
| SH21-065 | 2 1/2 | DN65 | 3/8 | M10 | 4.57 | 116 | 1.06 | 27 | 2.56 | 65 | 0.13 | 0.06 | 525 | 2334 |
| SH21-080 | 3 | DN80 | 1/2 | M12 | 5.75 | 146 | 1.54 | 39 | 3.39 | 86 | 0.32 | 0.14 | 525 | 2334 |
| SH21-100 | 4 | DN100 | 1/2 | M12 | 7.05 | 179 | 1.85 | 47 | 4.17 | 106 | 0.38 | 0.17 | 650 | 2890 |
| SH21-125 | 5 | DN125 | 5/8 | M16 | 8.58 | 218 | 2.24 | 57 | 5.16 | 131 | 0.67 | 0.31 | 1000 | 4445 |
| SH21-150 | 6 | DN150 | 5/8 | M16 | 9.57 | 243 | 2.24 | 57 | 5.63 | 143 | 0.79 | 0.36 | 1000 | 4445 |

