

SH11 - Swivel Hanger

Size Range: 1/2" through 8"

Material: Carbon steel

Finish: Gray epoxy coated

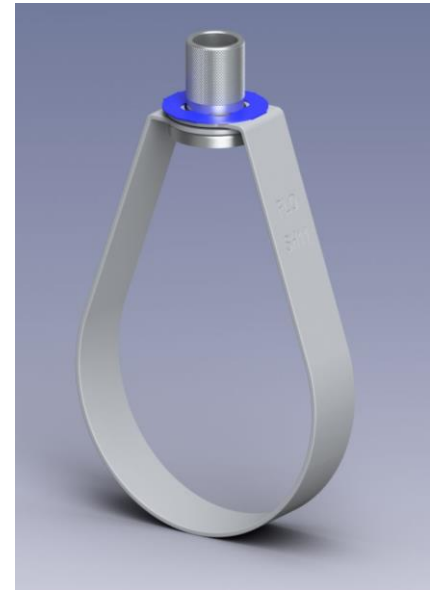
Service:

- Recommend for suspension of non-insulated stationary pipe line
- Manufactured to use the min. rod size permitted by NFPA for fire sprinkler pipe line

Approvals:

- Complies with Federal Specification A-A-1192A (Type 10) WW-H-171-E (Type 10) and MSS-SP-69 (Type 10).
- FM approved (except 1/2") & UL/ULC Listed

Ordering: Specify Part Number



Part Number	Nominal Pipe Size		RS		A		E		C		Wt.		Max. Rec. Load	
	in.	mm	in.	mm	in.	mm	in.	mm	in.	mm	lb	kg	lbs	N
	SH11-015	1/2	DN15	3/8	M10	2.80	71	1.06	27	1.69	43	0.09	0.04	300
SH11-020	3/4	DN20	3/8	M10	3.03	77	1.06	27	1.77	45	0.09	0.04	300	1334
SH11-025	1	DN25	3/8	M10	3.27	83	1.06	27	1.93	49	0.10	0.05	300	1334
SH11-032	1 1/4	DN32	3/8	M10	3.62	92	1.06	27	2.09	53	0.10	0.05	300	1334
SH11-040	1 1/2	DN40	3/8	M10	3.86	98	1.06	27	2.20	56	0.11	0.05	300	1334
SH11-050	2	DN50	3/8	M10	4.33	110	1.06	27	2.40	61	0.12	0.06	300	1334
SH11-065	2 1/2	DN65	3/8	M10	6.30	160	2.52	64	4.17	106	0.32	0.14	525	2334
SH11-080	3	DN80	3/8	M10	6.34	161	1.93	49	3.94	100	0.32	0.14	525	2334
SH11-090	3 1/2	DN90	3/8	M10	6.69	170	1.93	49	4.21	107	0.33	0.15	585	2600
SH11-100	4	DN100	3/8	M10	7.36	187	1.93	49	4.45	113	0.38	0.17	650	2890
SH11-125	5	DN125	1/2	M12	8.98	228	2.24	57	5.35	136	0.56	0.25	1000	4445
SH11-150	6	DN150	1/2	M12	11.10	282	3.31	84	6.97	177	0.67	0.31	1000	4445
SH11-200	8	DN200	1/2	M12	12.68	322	2.87	73	7.52	191	0.78	0.35	1000	4445

